

Enerview pro App

User Manual

Contents

1.EnerView Pro Introduction.....	01-01
1.1 Overview	
2.Operation Guide	01-28
2.1 APP Download & Installation.....	01-01
2.2 Login Page.....	01-05
2.2.1 Login	
2.2.2 Register	
2.2.3 Forgot Password	
2.2.4 Language Setting	
2.3 Power Plant List.....	05-07
2.3.1 Add Power Plant	
2.3.2 Power Plant List	
2.4 Device List.....	07-17
2.4.1 Adding Device	
2.4.2 Device List	
2.4.3 Device Details	
2.4.4 Parameter Settings	
2.4.5 Battery Information	
2.5 Home Page.....	18-18
2.6 Data Statistics.....	19-19
2.7 Fault Information.....	20-20
2.8 Me.....	21-28
2.8.1 Account Information	
2.8.2 About Us	
2.8.3 Message Center	
2.8.4 Appearance Theme	
2.8.5 Settings	
2.8.6 After-sales Service Center	
2.8.7 Local Tools	

Disclaimer

This application is solely an auxiliary tool for equipment monitoring and operation & maintenance. The data provided is for reference only. Our company shall not be held responsible for any losses resulting from improper operation, equipment malfunction, etc. The intellectual property rights of this manual and the App belong to Shenzhen Times Energy Innovation Technology Co., Ltd. Reproduction, alteration, or commercial use without permission is prohibited. Please read this manual carefully before using the product. The manual content is updated with App iterations; users may download and review it periodically as our company will not provide separate notifications for updates.

1 Introduction to the EnerClo Monitoring Platform

1.1 Overview

The Enerview Pro App is a power plant and equipment management tool provided for end-users, with the following main functions:

Remote Monitoring: Remotely obtain key data such as the operational status and fault alarms of power plant equipment, allowing users to grasp equipment dynamics without on-site presence.

Data Visualization: Present equipment operational data intuitively through charts and curves, helping users quickly analyze data patterns and assisting in O&M decision-making.

Convenient Management: Support remote management operations for power plant equipment, simplifying O&M processes, and improving management efficiency.

Note: The data provided by the App is for reference only. Actual equipment operation and maintenance should be combined with on-site conditions.

2 Operation Guide

2.1 APP Download & Installation

You can download and install Enerview Pro from the corresponding application store based on your device system type.

- **Android users:** Search for "Enerview Pro" in the Google Play Store.
- **iPhone users:** Search for "Enerview Pro" in the App Store.

Mobile OS Requirements: Android 6.0, iOS 13.0 or higher.



2.2 Login Page

2.2.1 Login

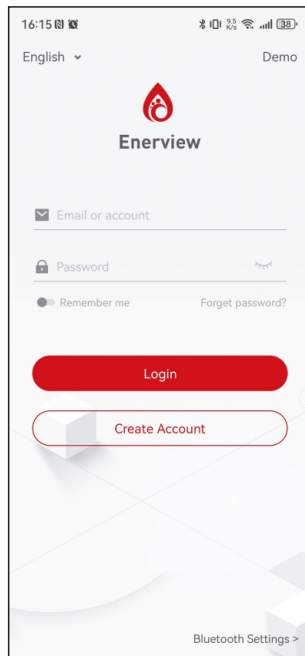
- ① **Enter the Login Page:** Locate the Enerview Pro App icon on your phone's home screen. Tap the icon to launch the App. It will automatically jump to the login page.
- ② **Enter Login Information:** In the account input box, enter your registered email address or account name. In the password input box, enter the corresponding account password (note

case sensitivity to avoid input errors).

③ **Choose to Remember Password:** To simplify future logins, you can check the "Remember me" option (after checking, the next time you start the App you won't need to re-enter the password. It's recommended to use this feature on your personal frequently used devices).

④ **Complete Login:** After confirming the account and password are entered correctly, tap the "Login" button to enter the App's main interface and start using the power plant equipment monitoring and management functions.

⑤ **Action for Unregistered Users:** If you haven't registered an account yet, tap "Create Account" at the bottom of the login page, complete the account registration as per the instructions, and then log in.



2.2.2 Register

① **Fill in Required Information:** Fields marked with "*" on the page are mandatory and must be accurately filled:

Email Address: Enter a valid personal or corporate email address (used for receiving verification codes and subsequent login verification). Ensure the format is correct.

Get Verification Code: Tap the "Send" button. The system will send a verification code to the entered email. Please check your email (if not received, check the spam folder or resend).

Verification Code: Accurately enter the verification code received in the email into the corresponding field, avoiding input errors.

② Set Login Password:

Password: Enter an 8-16 character password, which must include numbers, letters, and special characters (e.g., "Abc123!@#") to ensure password strength.

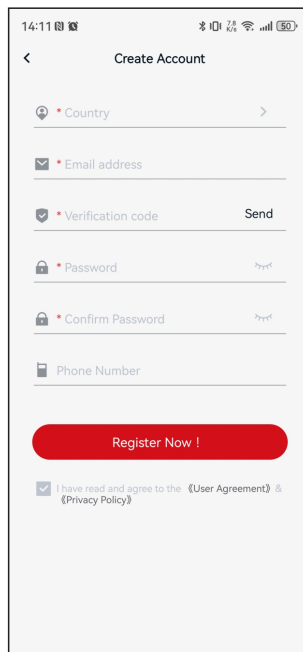
Confirm Password: Enter the same content as the "Password" again. The two entries must match exactly.

③ Complete Registration and Login:

Carefully review the agreement terms. If you agree, check the agreement box and confirm that all fields are completed. The system will automatically validate the information (such as verification code validity, password format, etc.). Validation success means registration is successful.

If registration fails, modify the corresponding fields according to the page prompts (e.g., "Password format does not meet requirements", "Verification code has expired"), then resubmit.

After successful registration, you can directly log in using the registered email account and the set password.



14:11

Bluetooth, Wi-Fi, Cellular, Signal strength, 5G

< Create Account

Country

Email address

Verification code Send

Password

Confirm Password

Phone Number

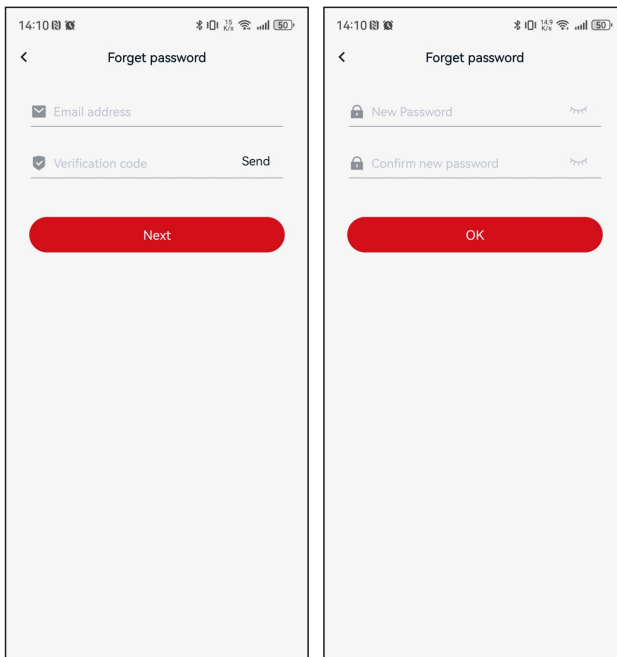
Register Now !

I have read and agree to the [User Agreement](#) & [Privacy Policy](#)

2.2.3 Forgot Password

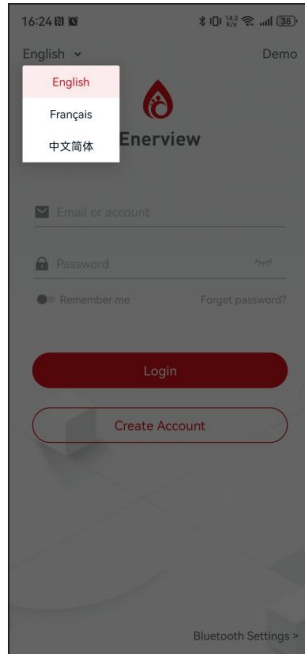
On the login page, tap "Forgot Password" (below the password input field) to jump to the Forgot Password page:

- ① **Identity Verification:** Enter the email address bound during registration, tap "Send" and enter the verification code (if not received, check the spam folder or resend).
- ② **Reset Password:** After verification is passed, tap "Next", set a new password following the password format used during registration, and confirm it.
- ③ **Complete Login:** After successfully resetting the password, log in to the App using the original email and the new password.



2.2.4 Language Setting

On the login page, tap the language option. Select the desired language from the pop-up language list. After selection, the App interface language will immediately update to your chosen language, and all subsequent operations will be displayed in that language.

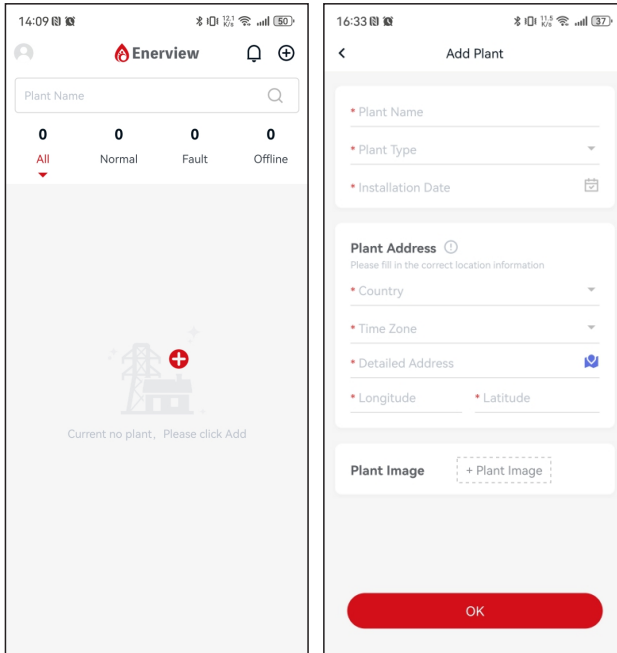


2.3 Power Plant List

2.3.1 Add Power Plant

After the first login, tap the "+" button on the page or at the top right to enter the power plant creation page:

- ① **Fill in Required Information:** All fields marked with "*" (Power Plant Name, Power Plant Type, Installation Date, Country, Time Zone, Detailed Address, Latitude/Longitude) must be filled in.
- ② **Country and Time Zone:** Must be selected accurately (local time zone; set to Daylight Saving Time zone during DST period). Incorrect settings may cause errors in equipment data statistics time.
- ③ **Complete Creation:** After all information is filled in, tap the "OK" button at the bottom to complete the power plant creation.



2.3.2 Power Plant List

Manages all power plants created under the account, displaying real-time core daily data for each plant (PV generation, load consumption, battery charge/discharge amount, grid feed-in/take amount, generator amount).

① Operational Functions:

□ Tap a power plant entry to view the system data for that power plant.

□ Tap the "Edit icon" on the right side of a power plant to edit its information.

□ Enter the power plant name in the top search box (supports fuzzy search) to quickly locate the target power plant.

② Status Description:

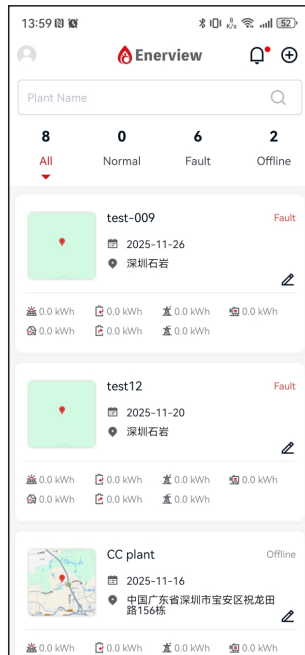
- Power plant statuses are "Normal", "Fault", "Offline".

□ Normal: At least one system (HPS/PCS system) is operating normally.

- Fault: All systems are in a fault state.

- Offline: All systems are offline.

③ **System Limitation:** A single power plant does not support multiple parallel systems. Multiple parallel systems require creating separate power plants for management.



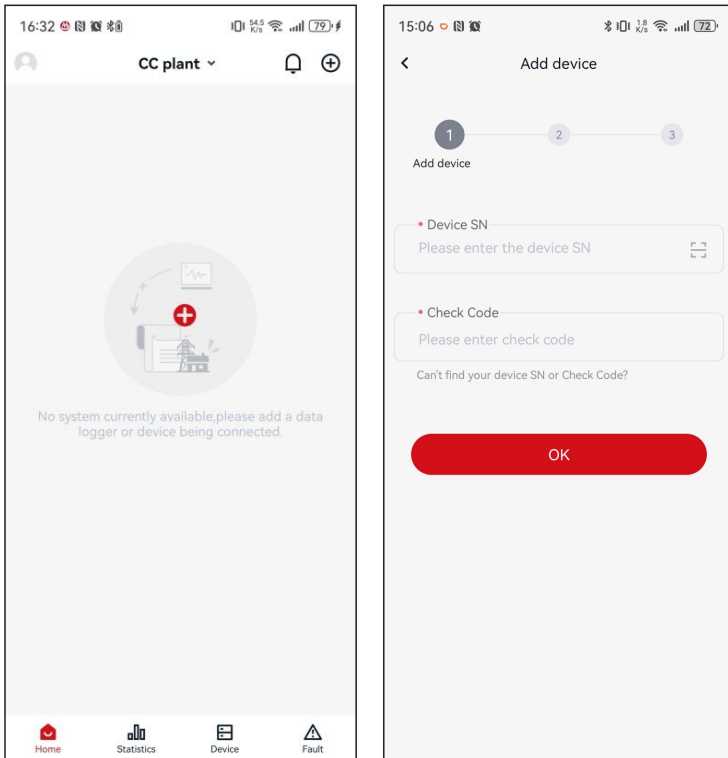
2.4 Device List

2.4.1 Select Network Configuration Method

After the power station is successfully created, you need to add collector devices. Locate the "Add" entry and go to the addition page. The process is as follows:

① Add Device

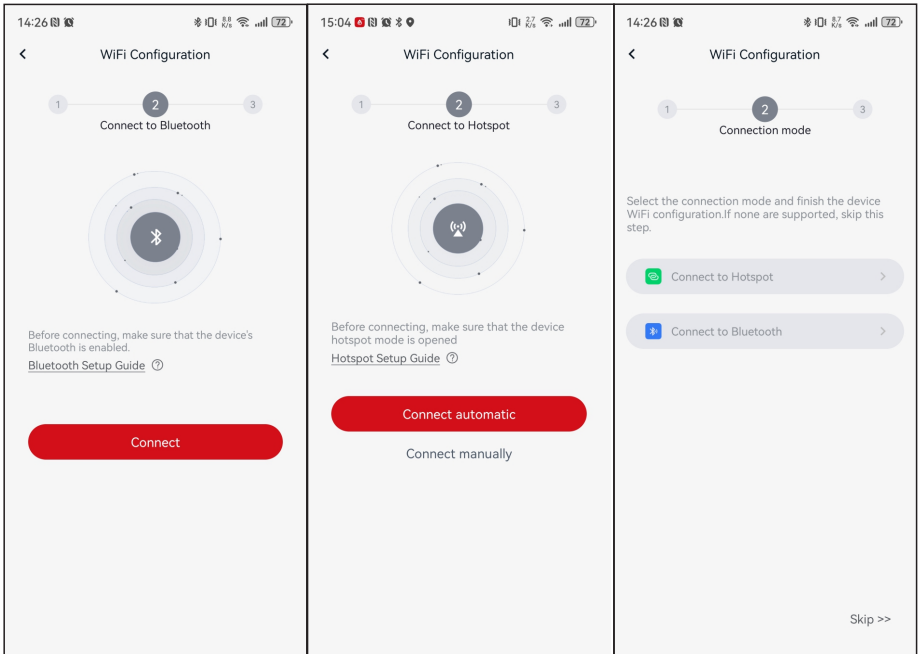
- Fill in the two required fields on the page and tap the "OK" button. The App will submit the information to the cloud for verification. If the cloud recognizes that the device has already established normal communication with the server, the network configuration step will be skipped, the device will be successfully added, and the interface will automatically return to the device list. If the device has not communicated with the cloud, the device will still be added successfully, and the interface will proceed to the next step - network configuration.
- Device SN: The unique identifier of the device (affixed to the device body/packaging).
- Check Code: The device verification code (validation information paired with the SN to confirm device legitimacy).



② Select Network Configuration Method

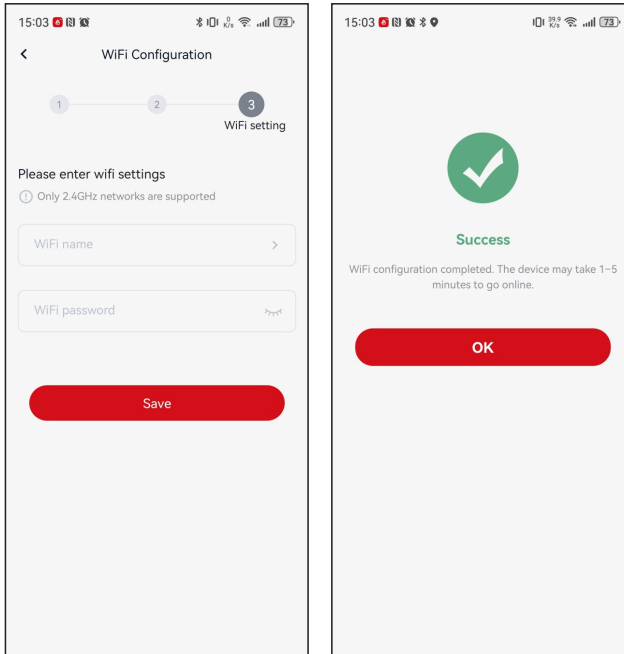
- After the device is successfully added, follow the on-screen instructions to select a network configuration method to complete device connection.

Network configuration refers to WiFi network setup. If your device uses 4G or Ethernet for internet connection, you can tap "Skip >>" to skip this step. For specific configuration, please refer to the device's accompanying manual. Due to version differences, some device models may not support network configuration via the App. If you have any questions, please contact our after-sales technical support.



③ WiFi Configuration

● After successfully connecting via hotspot or Bluetooth, enter WiFi Setting to complete the final network configuration. Enter the available 2.4GHz band WiFi name and corresponding password near the device, then tap "Save" to complete the network configuration. After receiving the WiFi information, the device will automatically switch to networking mode, connect to that WiFi, and establish communication with the cloud.



2.4.2 Device List

Displays device information under the power plant, categorized by device type. Only actual connected device types are shown (limited to devices purchased from our company).

① Device Status Description:

- When a device is powered off or disconnected from the data logger, its status displays as "Lost". The server will then stop updating data for that device.
- When the device is online normally, its corresponding operational status is displayed.

② Search Function: Enter a "Device Name or SN" in the top search box to quickly locate the target device.

③ Parallel System: For devices with parallel configurations (e.g., multiple PCS units in parallel), the system will automatically mark master/slave relationships based on device feedback data:

- Master/Slave Identification: "Master" or "Slave" identifiers are displayed at the top left corner of the device icon, distinguishing device roles. For detailed master/slave setup instructions, see section 2.4.4.
- Exception Handling: If the parallel devices are not correctly configured for master/slave, the server will default to displaying them as "Standalone" without master/slave identifiers.

④ **Battery Devices:** Primarily displays three types of battery-related devices: MBMS, BCU, VoltStack BCU.

MBMS (Master Battery Management System): Responsible for controlling the operation of the entire battery system and enabling communication interaction with the inverter.

BCU (Battery Control Unit): Assists in monitoring local battery status, working in coordination with MBMS to ensure battery safety.

VoltStack BCU (Battery Control Unit): A control unit designed specifically for the VoltStack series batteries, capable of independent communication interaction with the inverter.

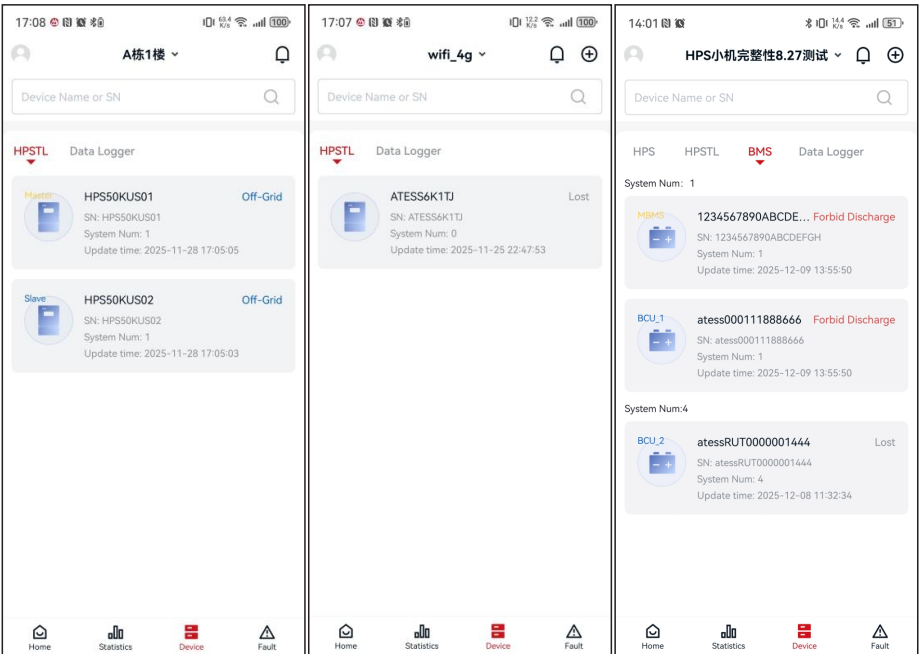
⑤ **Application Scenarios and System Number Setting**

Shared Battery Scenario: When multiple inverters share a single battery system, set the "System Number" for the associated inverters and battery to the same value.

Dedicated Battery Scenario: When each inverter operates independently with its own dedicated battery, set the same "System Number" for each corresponding device pair.

Identification Rule: The server identifies inverters and batteries with the "same System Number" as belonging to the same group. The group association can be viewed in the device list via the number.

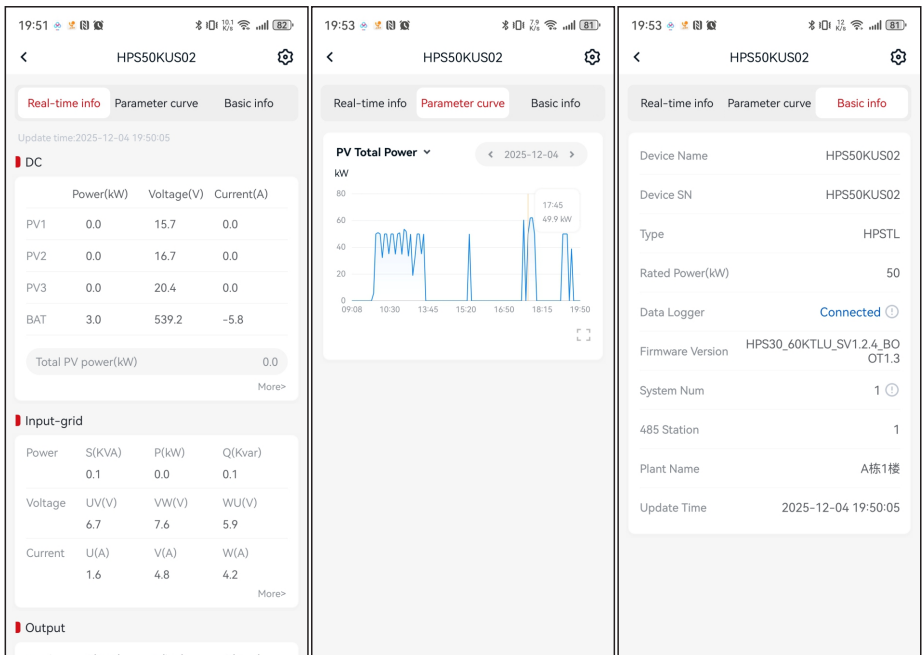
Multi-Device Adaptation: Besides battery devices, other device types like HPS and PCS also support grouping by "setting the same System Number" for easier collaborative management.



2.4.3 Device Details

The Device Details page contains 3 functional modules, switchable via top tabs:

- ① **Real-time Info:** Displays the most recently updated operational data of the device (covering indicators such as voltage, current, power, etc.). Data is updated every 1~5 minutes, depending on the data logger's transmission interval.
- ② **Parameter Curve:** Select a specific date to view trend curve data of device indicators like power, voltage, current, SOC, etc., supporting intuitive analysis of data changes.
- ③ **Basic Info:** Displays the basic attributes of the device (such as device SN, type, firmware version, data logger information, etc.).



2.4.4 Parameter Settings

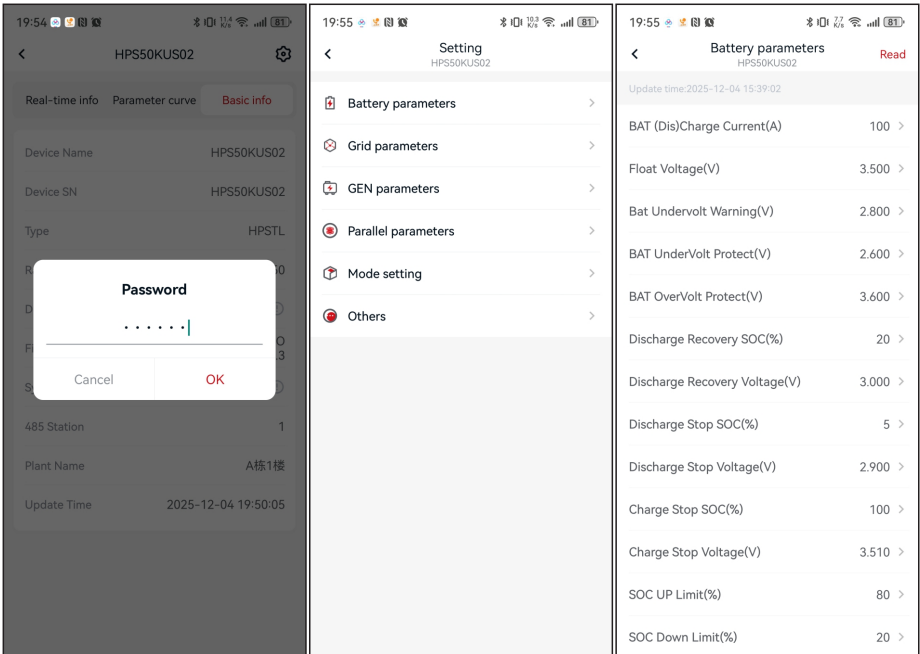
On the device details page, find the settings entry, tap it, and a password verification window will pop up. Enter the password and tap "OK" to verify and enter the settings page.

Important Note: Exercise extreme caution when setting device parameters. Incorrect parameter settings may affect device data transmission or operational stability. It is recommended to operate under the guidance of professional technical personnel to avoid device failure or data anomalies caused by disoperation.

① Read and Set Parameters

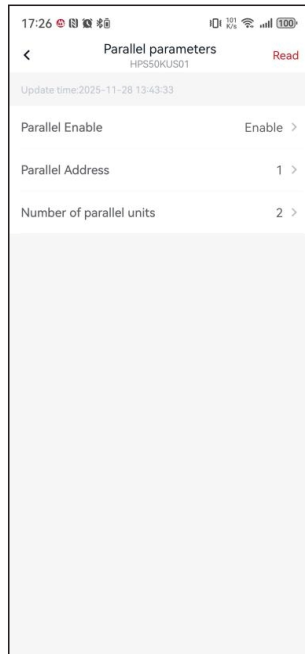
Tap the "Read" button to retrieve the latest device parameter data.

On the settings page, you can adjust parameters that support remote configuration, such as battery parameters, grid parameters, and grid-tie parameters.



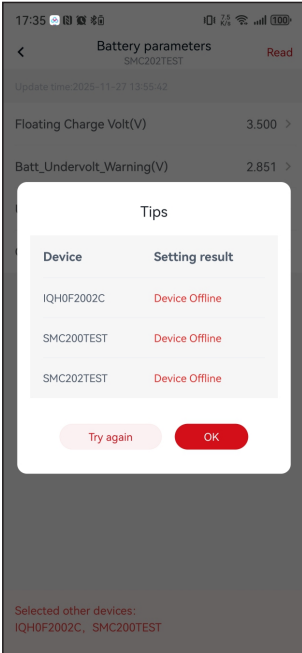
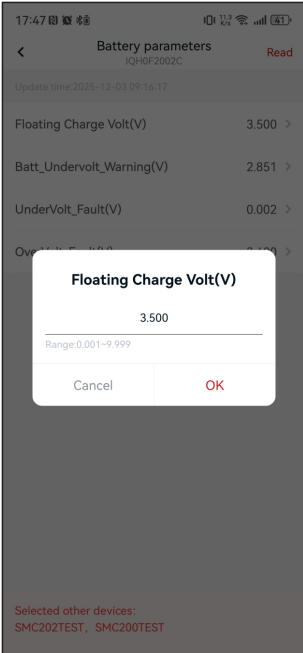
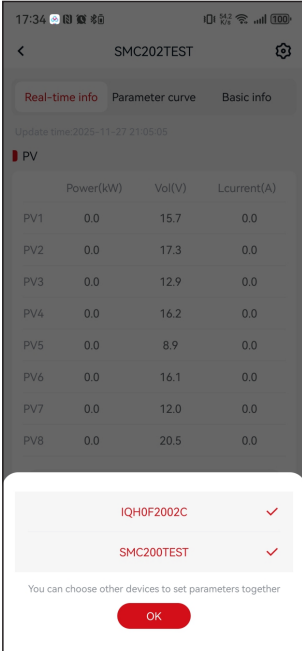
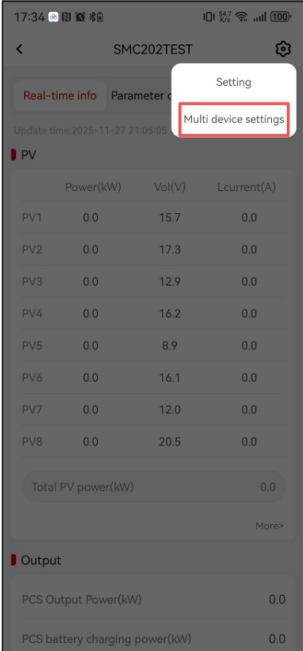
② Parallel Settings

- Parallel enable must be set to "Enable"; for single machine, set to "Disable".
- The parallel address should be set to "1" for the master unit, and to numbers above "1" for slave units (only one master unit can be set per power station, with multiple slave units; otherwise, the system will not recognize them and will treat them as single units).
- Set the parallel quantity according to the actual number of connected units.



③ SMC Batch Settings

- If there are multiple SMC devices, batch settings can be performed on them. Other device types are currently not supported.
- Enter any SMC device details, find the "Multi device settings" entry. After password verification passes, a list of other SMC devices will appear. Select the devices to be configured together, confirm, and enter the parameter settings page.
- Modify the corresponding parameters, and the changes will be sent to all other selected devices simultaneously. If any setting fails, you can retry by tapping the retry button to send again.



2.4.5 Battery Information

In the battery device details, tap "More" to enter the Battery Information page. View real-time voltage data for BCU, Module, and Cell hierarchically. The data viewed for MBMS and BCU devices differs:

- MBMS Device: Views cell voltage data for all associated BCUs and their modules.
- BCU Device: Views cell voltage data for the modules managed by itself.

① BCU

- Cards are displayed sequentially according to the numbers of BCUs associated with the MBMS (e.g., BCU_1). Each card shows the "Total Vol" of the corresponding BCU.
- Tap a BCU card to enter the Module level page for that BCU and view voltage data for its modules.

② Module

- Displays all modules under the current BCU (e.g., #1 Module). Each card shows the "Max Voltage" and "Min Voltage" of the corresponding module.

Tap a Module card to enter the Cell level page for that module and view individual cell voltage data.

③ Cell

Displays all individual cells under the current module (e.g., #1 Cell). Each card shows the voltage data for the corresponding cell.

④ Voltage Curve

In the top right corner of the BCU and Module pages, tap the "Chart icon" to view the voltage curve.

- Presents the voltage distribution of all individual cells under the current BCU as a trend chart. Curve height corresponds to voltage value.
- The chart marks "Max" and "Min" identifiers, linked to the corresponding modules. The curve fluctuations intuitively show the voltage consistency and variation among cells, helping quickly identify abnormal cells.

17:45

< ATESS20240308MBMS11

Real-time info Parameter curve Basic info

Update time:2025-11-24 10:45:15

Voltage

Max cell voltage(V) (2 bcu-17 module-2)	Min cell voltage(V) (2 bcu-6 module-12)
3.298	3.294

More>

Temperature

Max temperature(°C) (6 bcu-1 module)	Min temperature(°C) (1 bcu-1 module)
25.0	24.0

Total Voltage(V)	711.0
Total Current(A)	0.0
Charge max current(A)	750.0
Discharge max current(A)	750.0
SOC(%)	84

17:45

< ATESS20240308MBMS11

BCU_1

Total Vol: 710.0

BCU_2

Total Vol: 710.0

BCU_3

Total Vol: 710.0

BCU_4

Total Vol: 710.0

BCU_5

Total Vol: 710.0

BCU_6

Total Vol: 711.0

BCU_7

Total Vol: 711.0

BCU_8

Total Vol: 711.0

17:45

< ATESS2024308BCU00001(BCU_1)

#1 Module >

3.295V Max Voltage
3.293V Min Voltage

#2 Module >

3.295V Max Voltage
3.294V Min Voltage

#3 Module >

3.295V Max Voltage
3.294V Min Voltage

#4 Module >

3.295V Max Voltage
3.294V Min Voltage

#5 Module >

3.295V Max Voltage
3.294V Min Voltage

#6 Module >

3.295V Max Voltage
3.294V Min Voltage

#7 Module >

3.295V Max Voltage
3.293V Min Voltage

#8 Module >

3.295V Max Voltage
3.294V Min Voltage

#9 Module >

#10 Module >

17:53

< #1 Module

#1 Cell

3.294V Voltage

#2 Cell

3.295V Voltage

#3 Cell

3.294V Voltage

#4 Cell

3.294V Voltage

#5 Cell

3.294V Voltage

#6 Cell

3.294V Voltage

#7 Cell

3.294V Voltage

#8 Cell

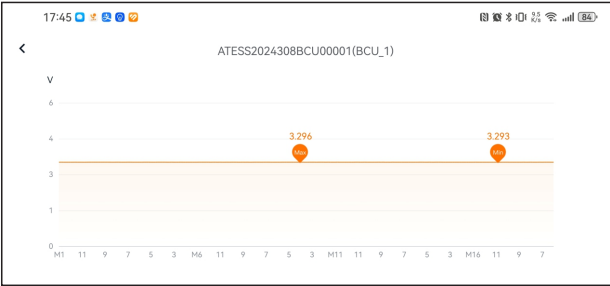
3.294V Voltage

#9 Cell

3.294V Voltage

#10 Cell

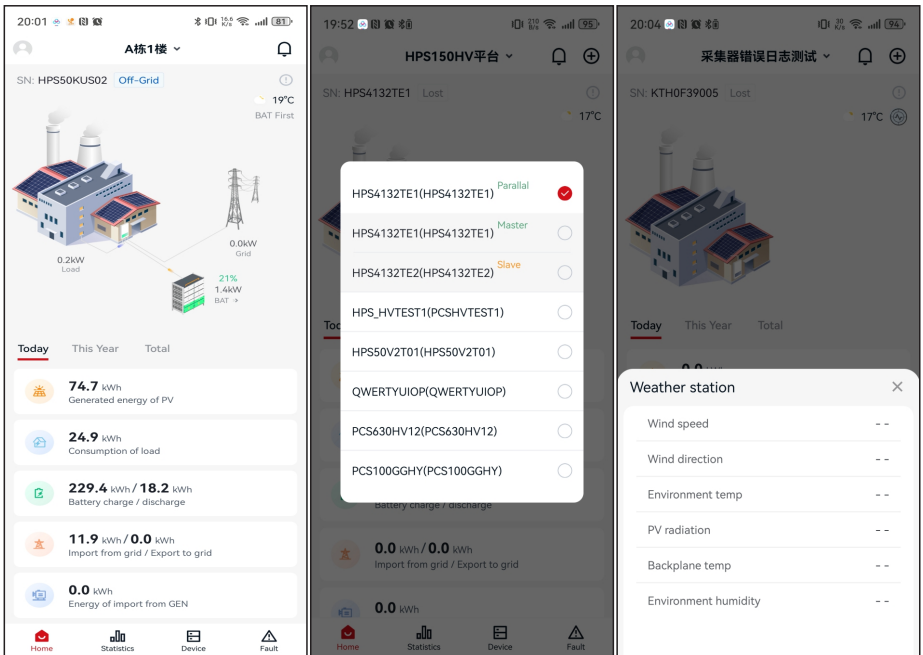
3.294V Voltage



2.5 Home Page

The Power Plant Home Page is used for real-time monitoring of system operational data. Core information is as follows:

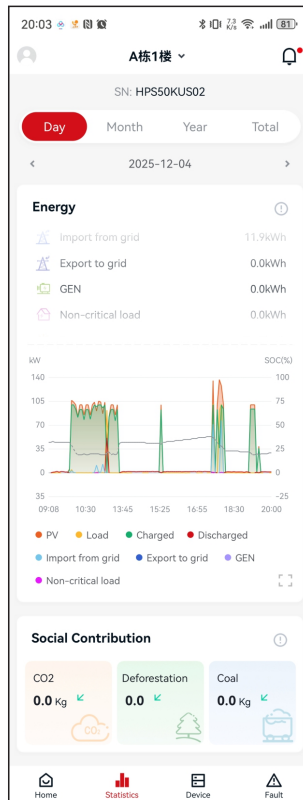
- ① **System Switch (Dropdown):** The dropdown options are the SNs of HPS/PCS devices. You can select to view total parallel system data or individual device data.
- ② **System Status:** Displays the status of the HPS/PCS device (in a parallel scenario, the master device status is displayed by default).
- ③ **System Diagram:** Intuitively displays the system's energy flow trends (e.g., PV supplying power to loads/batteries, energy interaction between grid and system, etc.). The top right includes:
 - Current operating mode (e.g., "Load priority").
 - The current day's weather and ambient temperature at the power plant location.
 - Data from connected environmental monitors (not displayed if not connected).
- ④ **Energy Statistics (Energy):** Statistics for PV generation, load consumption, battery charge/discharge amount, grid feed-in/take amount, and generator take amount are provided in three dimensions: "Today / This year / Total". For specific indicator descriptions, refer to the web version.



2.6 Data Statistics

This page supports statistics and trend analysis of power plant system parameter data across Day / Month / Year / Total dimensions:

- ① **Query Dimension Switch:** Use the top "Day/Month/Year/Total" options to switch between statistical data for different time ranges.
- ② **Carousel Statistics:** Displays the cumulative energy for each parameter within the selected time range (e.g., selecting "2023-01-01" shows the value for that day, selecting "2023-01" shows the value for that month).
- ③ **Data Charts:**
 - Query by "Day": Displays real-time power and SOC trend curves for each parameter.
 - Query by "Month/Year/Total": Displays power generation trend curves for each parameter.
 - Supports tapping for full-screen viewing of chart details.
- ④ **Social Contribution Statistics:** Displays cumulative values for "CO₂ Reduction", "Forest Preservation", and "Coal Saving". Calculation logic: Cumulative PV power generation of the power plant × the corresponding coefficient entered when adding the power plant.



2.7 Fault Information

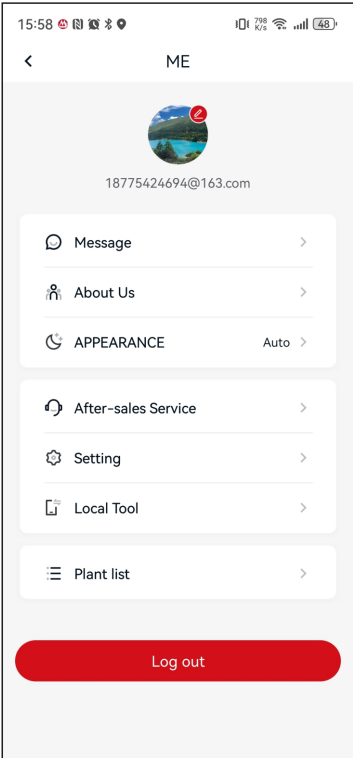
This page centrally manages fault data for all devices under the power plant:

- ① Fault information is displayed categorized by device type (e.g., HPS, BMS). Each fault entry includes device SN, event SN, fault type, occurrence time, etc.
- ② When the "Recovery Time" field is empty, it indicates the fault is currently active. A specific time displayed means the fault has been recovered.
- ③ Enter a "Device Name or SN" in the top search box to quickly filter target fault information based on conditions.



2.8 Me

This page is the account and function management center, managing account information, message center, about us, theme switching, settings, and other functions. Tap the 'Log out' button to exit the system and return to the login page.



2.8.1 Account Information

On the "ME" page, tap the avatar to jump to the Account Information page.

① Configurable Items:

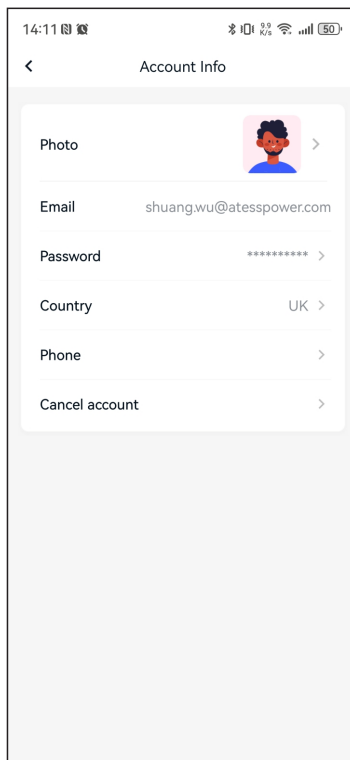
Photo: Tap to modify the account avatar.

Password: Tap to enter the password change page (requires verification of the old password).

Country/Phone: Tap to edit the corresponding information.

Cancel account: If the account is no longer needed, you can operate "Cancel account" to perform account cancellation. After cancellation, the account and its associated information such as power plants will be cleared.

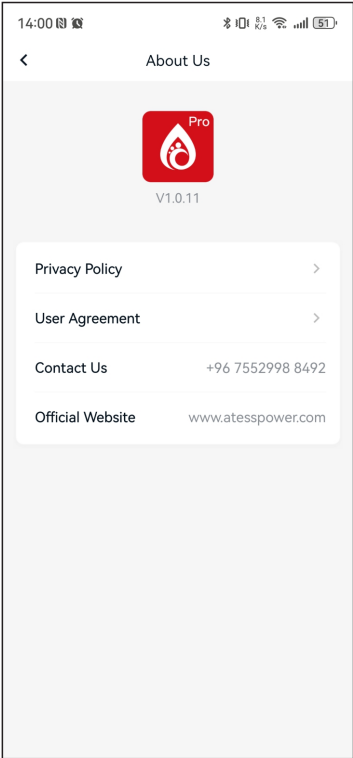
② **Fixed Information:** Email is the account registration email and cannot be directly modified.



2.8.2 About Us

You can view the App's current version, agreements, as well as our contact information, official website, etc.

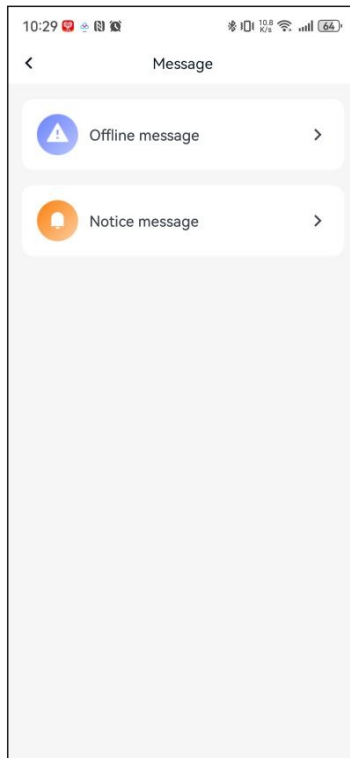
If there is a new version update for the App, "Update" will be displayed after the version number. Tap it to jump to the download page to get the latest version.



2.8.3 Message Center

The Message Center contains two types of notifications. Tap the corresponding entry to view details.

- ① **Offline Messages:** When a device or power plant status changes from "Online" to "Offline", the system automatically pushes this type of message to notify of the status change.
- ② **Announcement Messages:** Official messages released by the platform, such as product usage instructions, service adjustments, and activity notifications.



2.8.4 Appearance Theme

On the "Me" page, tap APPEARANCE. An appearance selection window will pop up:

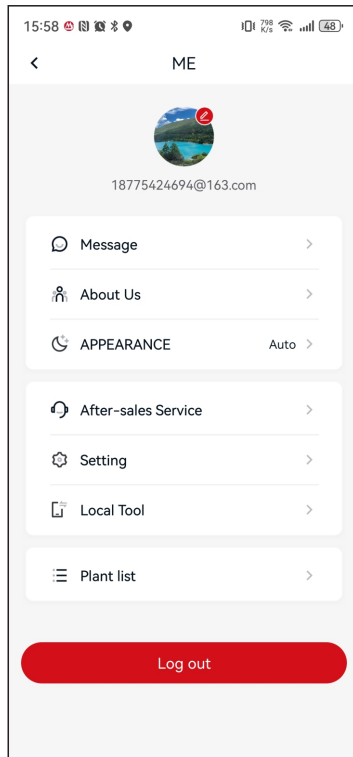
① Appearance Options

Light: Fixed light mode display.

Dark: Fixed dark mode display.

Auto: Automatic switching mode (Light from 6:00-18:00, automatically switches to Dark from 18:00-6:00).

② Apply Operation: After selecting the corresponding option, tap OK. The App appearance will immediately switch according to the settings.



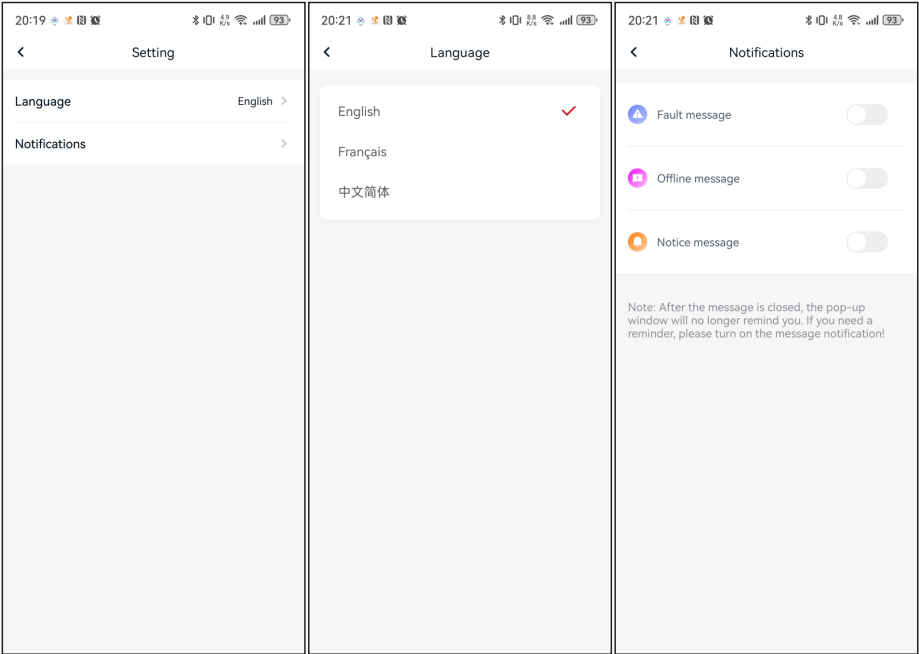
2.8.5 Settings

① **Language Setting:** This function is used to customize the display language within the App. After tapping to enter the language selection interface, choose your preferred language from the provided list (e.g., Simplified Chinese, English, etc.). After selection, menus, text, and other content within the App will switch to the corresponding language and take effect immediately.

② **Message Settings:** Manages notification permissions for messages. The interface provides independent control switches for each message type.

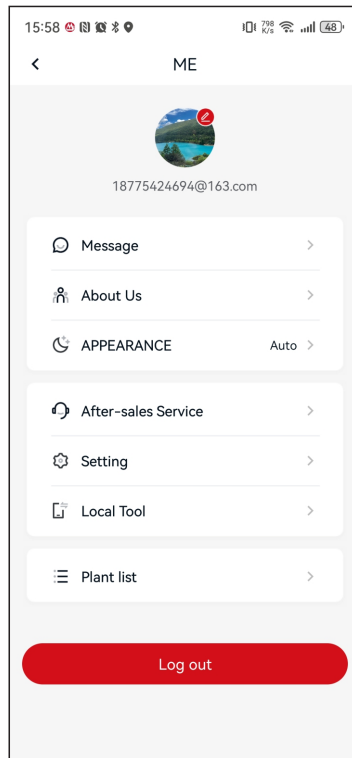
- **Fault Notification:** Controls the alert switch for device faults.
- **Offline Notification:** Controls the alert switch for device or power plant offline status.
- **Announcement Notification:** Controls the alert switch for various official announcements released by the platform.

After turning off the corresponding switch, your phone will no longer receive pop-up notifications for that type of message. You can only view historical messages by entering the Message Center later.



2.8.6 After-sales Service Center

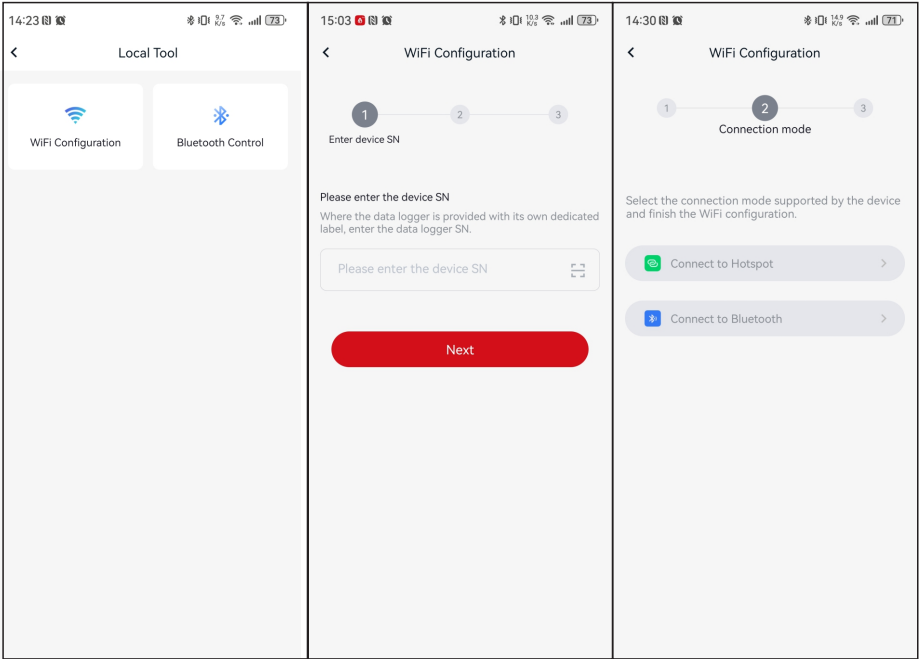
- ① Access Method: On the "Me" page, tap After-sales Service to jump to the After-sales Service Center page.
- ② Function: This module is the entry point for obtaining official after-sales support, providing services such as after-sales service application and application progress inquiry.



2.8.7 Local Tools

2.8.7.1 WiFi Network Configuration

If the device has been successfully added to the App but needs to be reconfigured, you can initiate the operation through this entry: follow the steps to scan/enter the Data Logger device SN, tap "Next", and then follow the on-screen instructions to complete the network configuration process.



2.8.7.2 Bluetooth Control

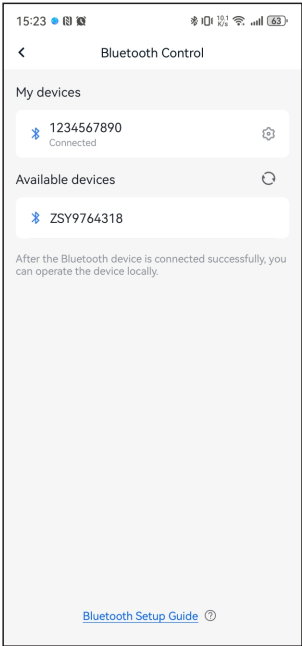
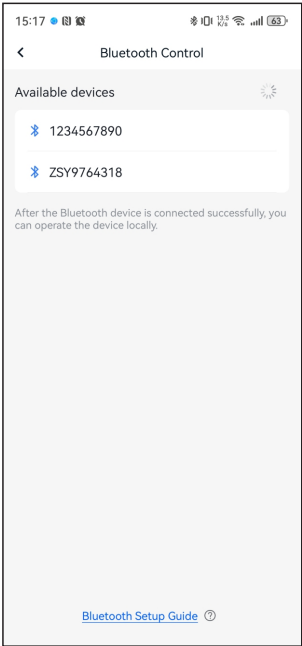
① Bluetooth Connection Page

Enter the "Bluetooth Control" page. The system will automatically search for nearby Bluetooth devices and display the results in the "Available devices" list. In the "Available devices" list, find the target device and tap the device name to initiate a Bluetooth connection.

After a successful connection, the device will show a "Connected" status indicator, and a "Settings icon" will appear on the right side of the device. Tap this icon to enter the device's internal page for parameter configuration and other operations.

Previously paired devices will be automatically saved in the "My devices" list. Next time, you can directly tap the device name in the list to quickly connect without needing to search again.

Additional Note: If the target device is not found, please check that the device's Bluetooth is turned on and within effective connection distance, or try refreshing the Bluetooth search list.



② Device List Page

After entering the device internal page, the list displays operable devices by device type (currently only Data Logger type is supported, with HPSTL, BCU and other device types to be added gradually).

③ Data Logger Device Details Page

Tap the target Data Logger device to enter the device details page, which includes the following functional modules:

- Device information

Tap to view basic device information: SN, Model, Software Version.

SN: Device serial number.

Model: Device model.

Software Version: Device software version.

- Parameter Settings

Tap to enter this module. Password verification is required first. After successful verification, device parameters can be set:

Server Url: Server address and port, used for device network communication. Please do not modify arbitrarily.

BCU Type: BCU device type. If used with BCU devices, select and set according to the actual hardware type.

BCU Number: Number of BCU devices. Enter the number according to the actual number of devices connected to the system.

Data Interval(min): Data collection interval time.

Restart: Restart button. After operation, the device will restart.

