

Guidelines for Using Commonly Used Tools

Standard Operating Procedures-**RS232**

ATESS ENERCOLLEGE

Technical Support Document



ATESS EnerCollege 🔍



enercollege@atesspower.com

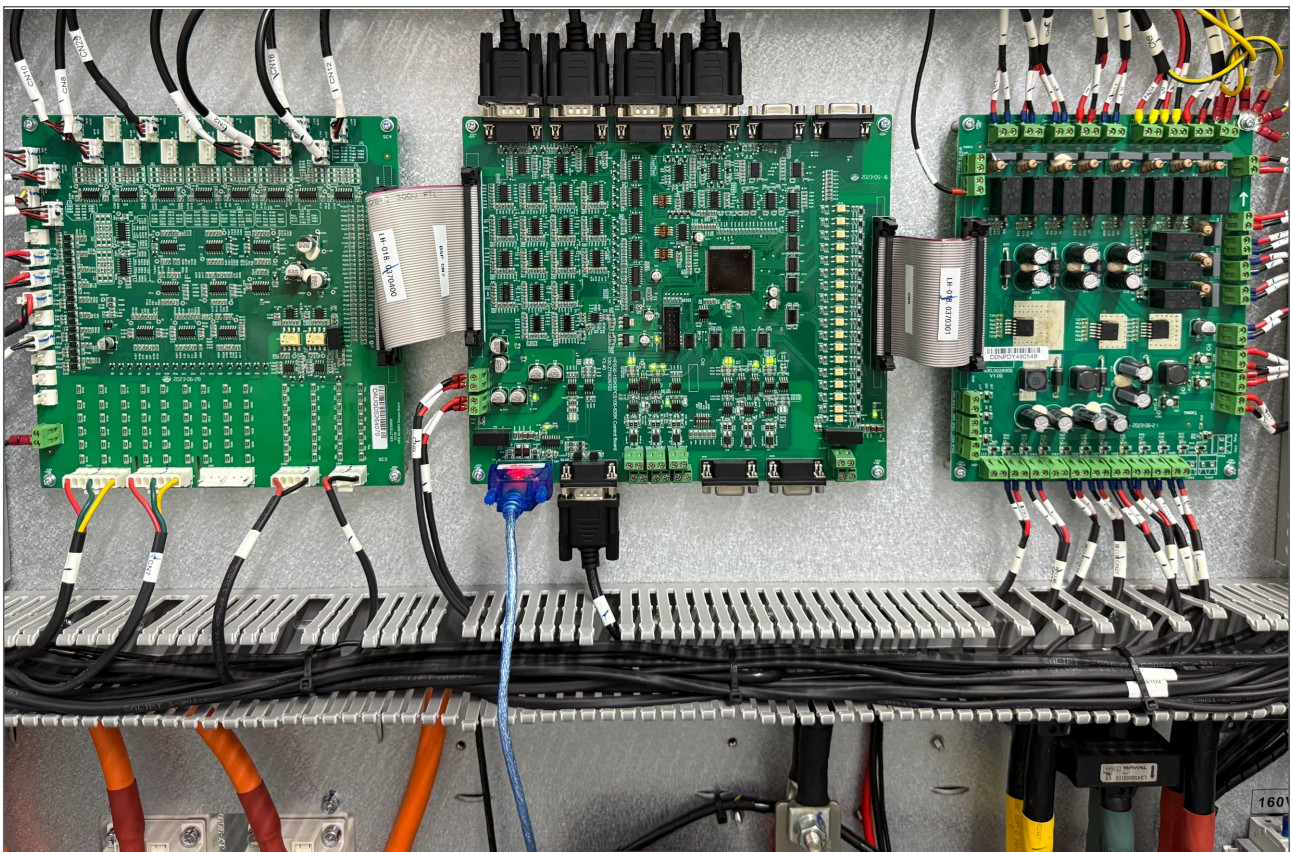


www.atesspower.com

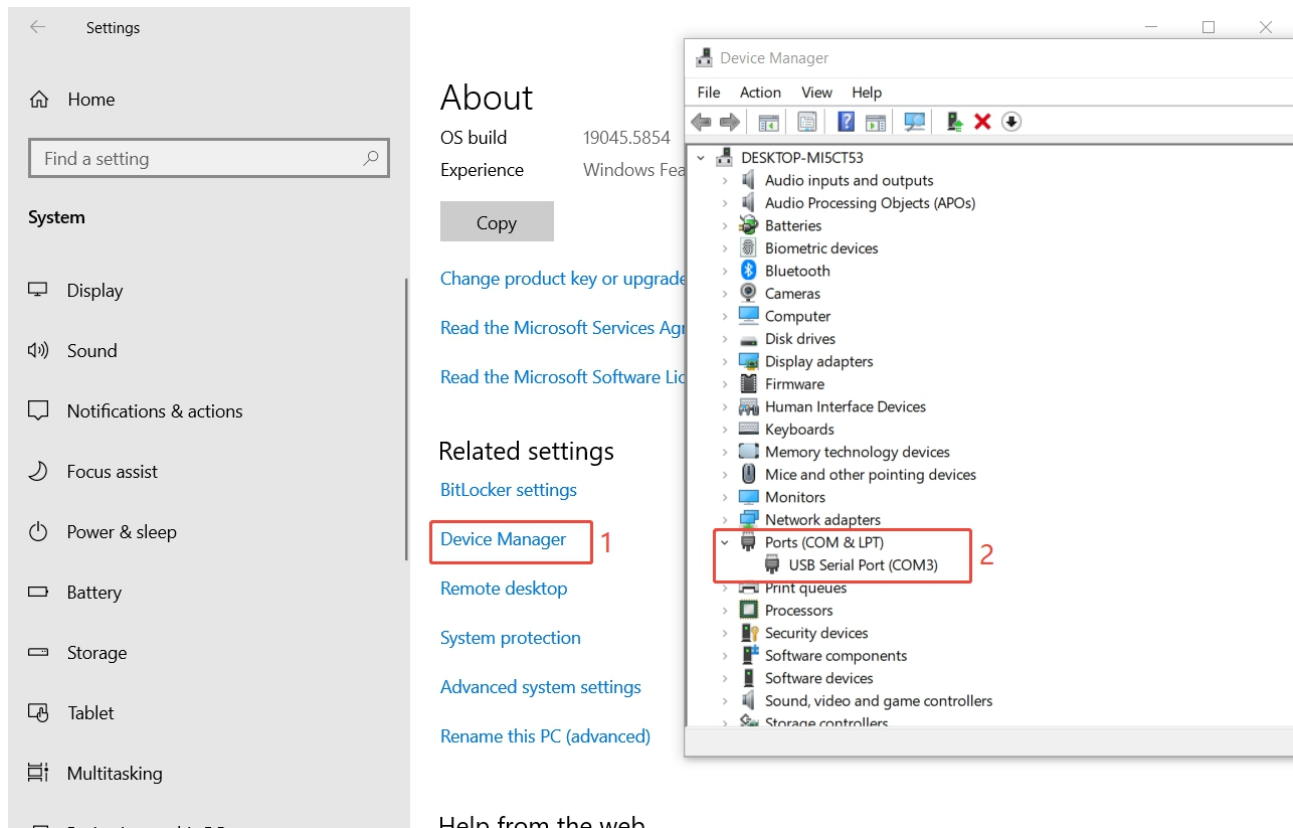
RS232 cable, It is a tool used to update the inverter DSP. After using the emulator to update, there is no application program inside the DSP, and it needs to be used to update the corresponding inverter software version.



As shown in the figure, connect the computer and DSP board through RS232. It should be noted that during the update, it is also necessary to ensure that the DSP board has power supply and the inverter is in a fault state. At the same time, set the ATS Enable or Bypass Cabinet Enable of the inverter to 0. Please refer to the preparation work before updating the emulator for specific details.



Firstly, open the device manager on the computer, and then check the port currently used for RS232, as shown in the figure. This indicates that the current RS232 port is COM3.



Then open DSP tool, which is a self-developed program by ATESS, so it needs to be obtained from after-sales personnel.

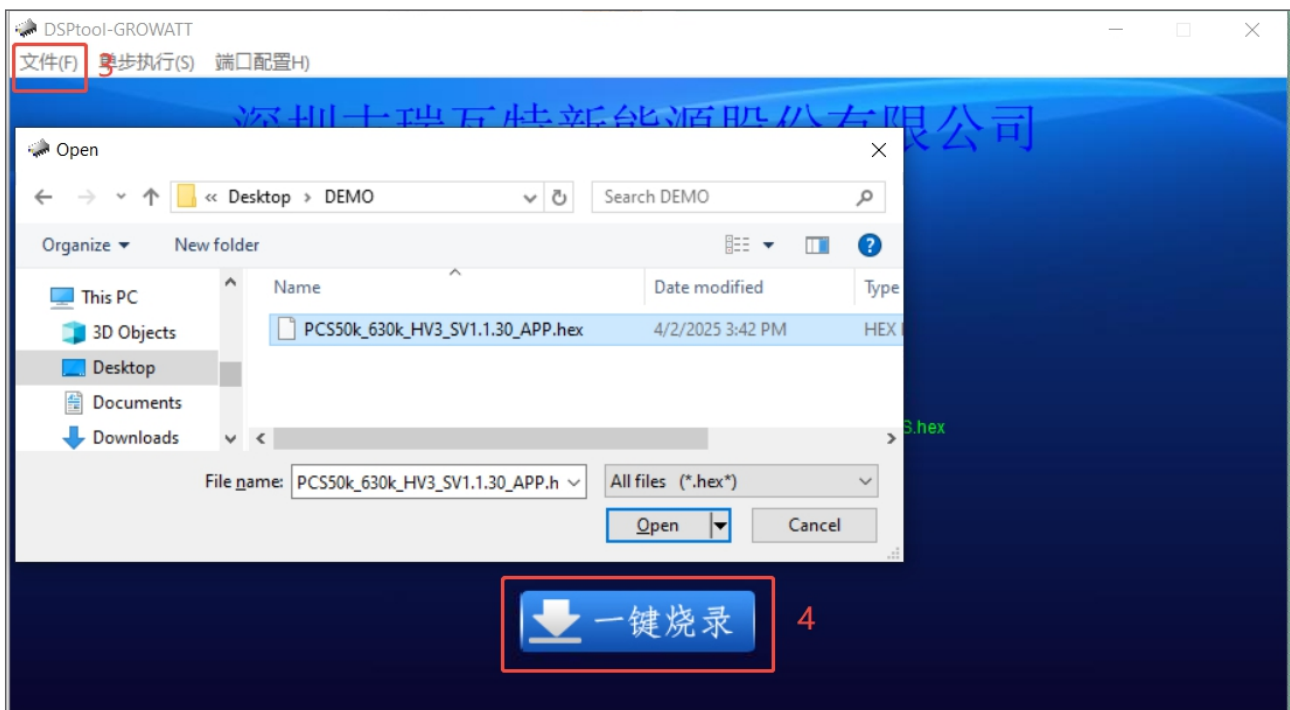
The image on the right is the main page when the program is running.



As shown in the picture, if your computer is not in the Chinese version, there may be an abnormality in the display, but it does not affect the program's operation. Firstly, click on 1文件 (F) location, select your update file, and note that the file is in XXX.hex format. Next, click on 2端口配置 (H) and select the RS232 port that was just queried. Finally, click on 3一键烧录 to update.



During the automatic update process of the program, the DSP chip content will be erased first and then rewritten. This process takes about 5 minutes, do not touch anything. Just wait for it to automatically complete the update.



When the following image appears, it indicates a successful update. Disconnect the RS232 cable and restart the power supply.

